

Think about a typical day in your classroom. Brainstorm what behaviors you find most challenging in your classroom. Drop your responses in the chat box



Addressing Challenging Behaviors

Rosalynn Jones, Ed.S

Professional Development Coordinator

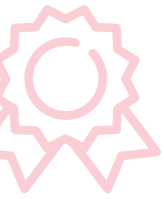
mdek12.org



MISSISSIPPI
DEPARTMENT OF
EDUCATION

Date





1

ALL Students Proficient and Showing Growth in All Assessed Areas



2

EVERY Student Graduates from High School and is Ready for College and Career



3

EVERY Child Has Access to a High-Quality Early Childhood Program

EVERY School Has Effective Teachers and Leaders

4



EVERY Community Effectively Uses a World-Class Data System to Improve Student Outcomes

5



EVERY School and District is Rated “C” or Higher

6



VISION

To create a world-class educational system that gives students the knowledge and skills to be successful in college and the workforce, and to flourish as parents and citizens



MISSION

To provide leadership through the development of policy and accountability systems so that all students are prepared to compete in the global community

Facilitators

5



Rosalynn Jones, MDE
Professional Development Coordinator
Facilitator



Kristi Higginbotham, MDE
Professional Development Coordinator
Driver

Challenging Behavior

Most children stop using challenging behaviors when:

- a.) the behavior stops working for them
- b.) they are disciplined
- c.) they get to kindergarten
- d.) they develop strong language skills

Challenging Behavior is defined as behavior that:

- a.) interferes with a child's learning, development or successful play
- b.) is harmful to the child or other children
- c.) puts a child at risk for later social problems
- d.) all of the above

Teachers should first list a child's _____ to set a positive approach to helping a child learn to use more positive behaviors.

- a.) hobbies
- b.) favorite toys
- c.) positive characteristics or strengths
- d.) assessment scores

As teachers prepare to work with a child with challenging behaviors, they will find that their _____ with that child is at the heart of the process.

- a.) trusting relationship
- b.) friendship
- c.) academic focus
- d.) all of the above



- Create a positive environment
- Greet students at the door
- Expectations should be clear
- Reframe the challenges
- Build winning relationships
- Model the behavior you want to see



What is Behavior?

Activity 1





A close-up portrait of a young boy with short, dark hair and a light complexion. He is looking slightly to the right of the camera with a neutral expression. He is wearing a light blue polo shirt with a subtle pattern. The background is plain white.

Behavior is Communication



A child's behavior is not always what it seems.

Behavior

What we don't see under the surface

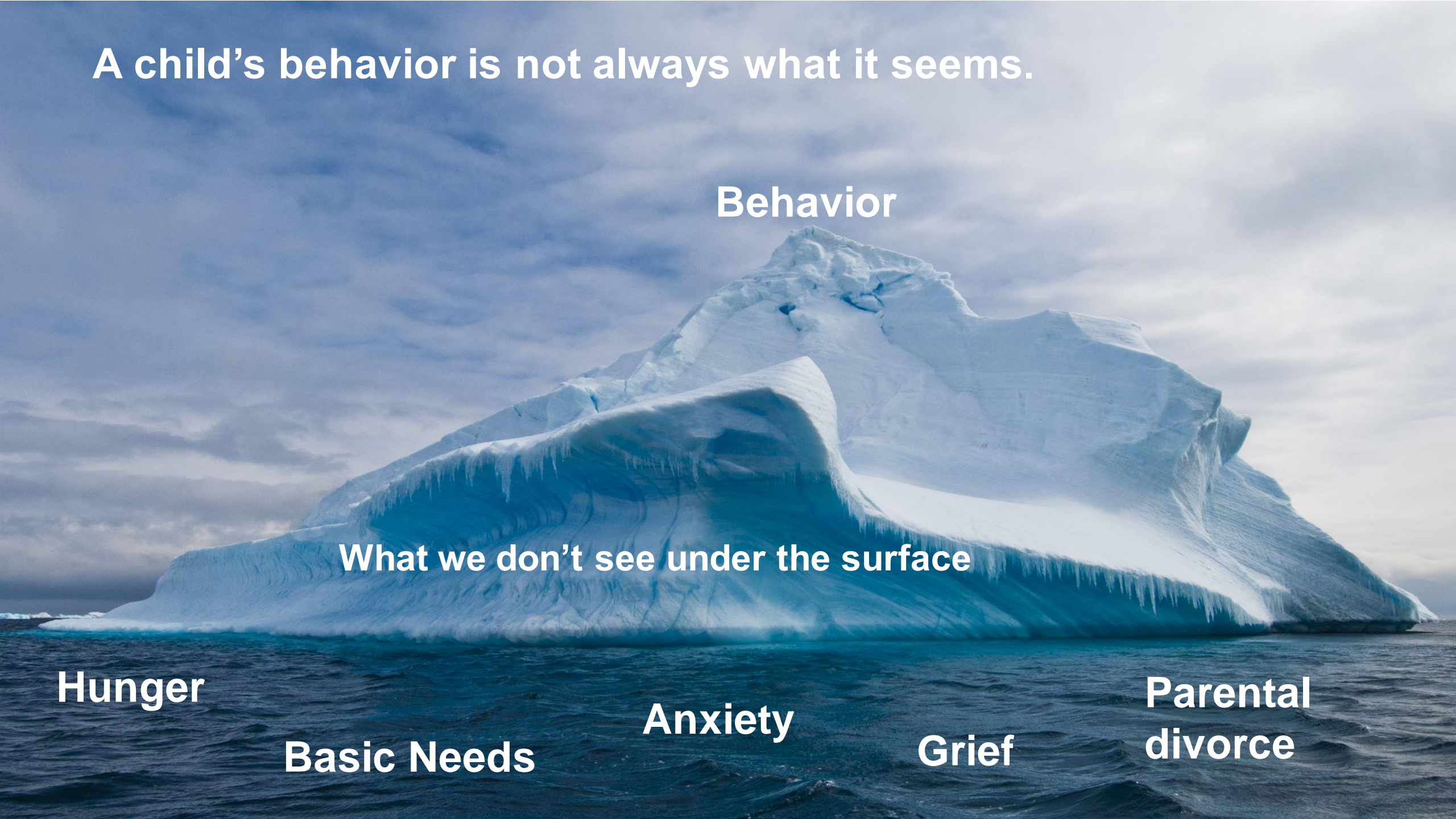
Hunger

Basic Needs

Anxiety

Grief

**Parental
divorce**





Sometimes what students
need the most has
nothing to do with your
lesson plan.

Ms. Decarbo

Academics

Behavior

Socialization





Meagan's Story



Behavior Impacts Behavior

Yale University Study

Yale University indicated that over 5,000 children were expelled from pre-school in one year.

This expulsion rate is more than 3 times that of children in kindergarten through the 12th grade.

The study also described as many as one in every ten children as having a serious behavioral problem

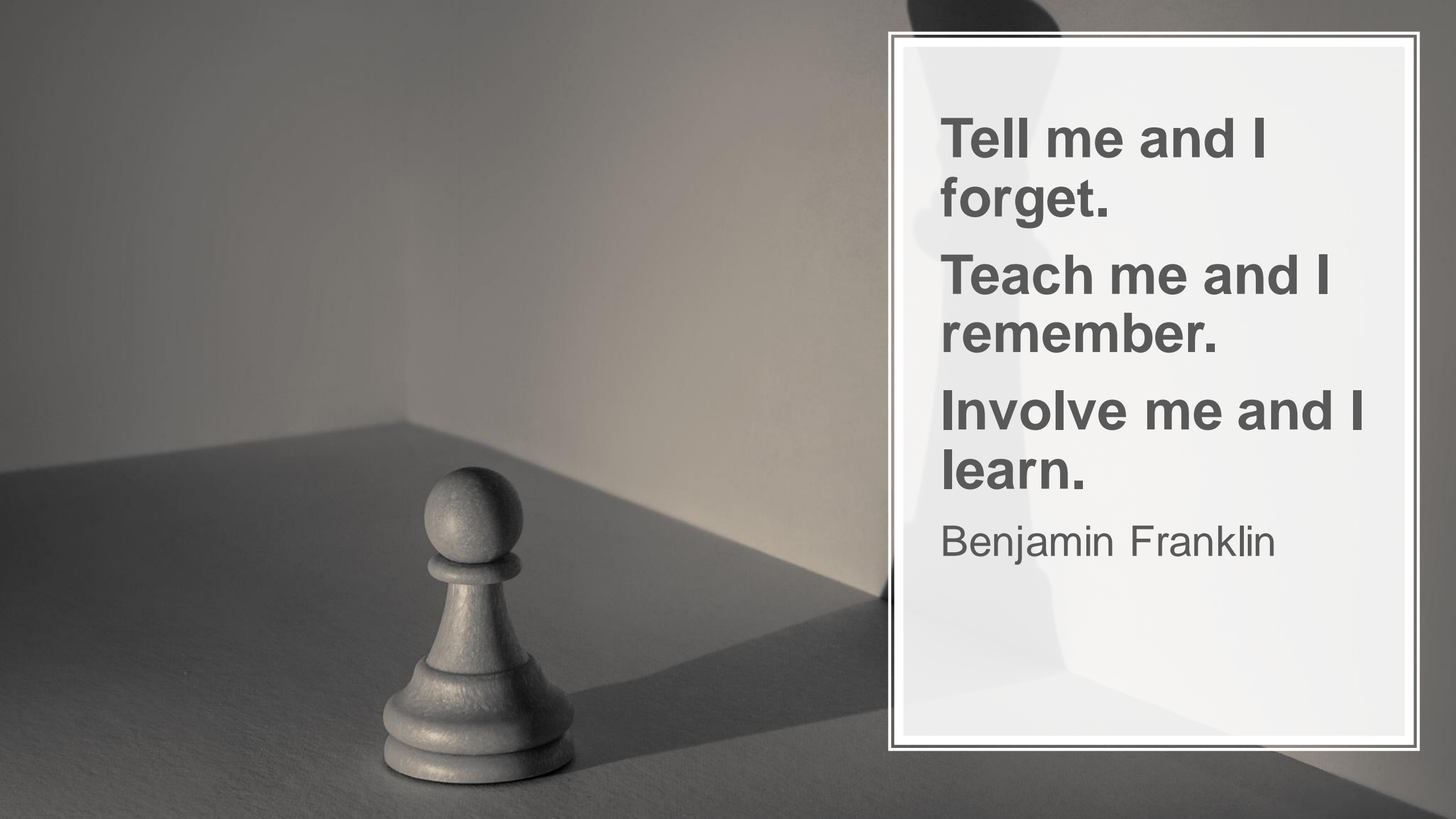
Frame Storming

Negative	Positive
John! No running in the hallway! How many times do I have to tell you that?	
Casey sit down and finish your assignment or get out of my room!	



Don't assume:

- all students know how they should behave in school.
- all students have had adequate practice with appropriate behavior.
- all behavior errors are deliberate.
- students will learn how to behave appropriately through negative consequences.

A dark, textured chess pawn stands on a dark surface, casting a shadow. To its right, a light gray rectangular box with a thin white border contains three lines of bold text and a signature.

**Tell me and I
forget.**

**Teach me and I
remember.**

**Involve me and I
learn.**

Benjamin Franklin

Avoid Power Struggles

Reframe the Challenges

Find a Positive

Offer Choices

Utilize visual aids

Remember tomorrow starts a new day!

Human Behavior Flows
From Three main Sources:
Desire, Emotion, and
Knowledge

Plato





Rosalynn Jones, Ed.S

Professional Development
Coordinator

rojones@mdek12.org

mdek12.org



MISSISSIPPI
DEPARTMENT OF
EDUCATION

