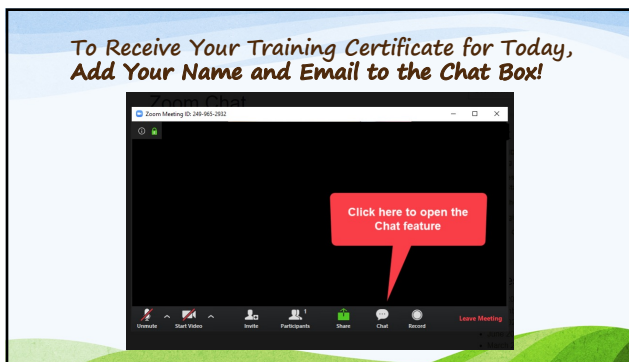




1



2



3

Things to Consider

- Have you studied the DHS web site on Child Care Strong requirements?
- Have you double-checked the calculated amount that you expect to receive?
- Do you plan to have a separate bank account dedicated to the Child Care Strong funds you will receive?
- Who will be "doing your books"? Will they be knowledgeable about DHS requirements?
- Do you plan to engage staff in your planning conversations? Parents?
- Do you anticipate change in your hours of operation? Numbers of children you intend to serve? What public notice will you provide and when?
- Have you and your staff received all the training required by DHS and the MS Department of Health to receive funds? IF you are a CCDF (CCPP) provider, all staff must complete the health and safety training before your funds are awarded. This training must be repeated every two years - are all your staff current? You can submit the application, but funds will not be awarded until training is complete.
- Non-CCDF licensed or registered providers do not have to complete the training.

4

Objectives

Upon completion of this training participants will:

- Revisit the mission of your child care center and how funding decisions will support your mission
- Have a better understanding of how to make decisions in spending the American Rescue Plan (ARP) funding that will influence the long-range plans for your center
- Create an organizational system through which you will compare your current situation related to the numbers and education of staff, use of evidence-based curriculum for four-year-olds
- Review/analyze your current professional development system and determine if improvements are needed
- Have a better decision about the Build Back Better Act and how it "fits" into the planning on how ARP funds can be spent

5

Mississippi Child Care
Strong Stabilization Grants
How may I use the funds?

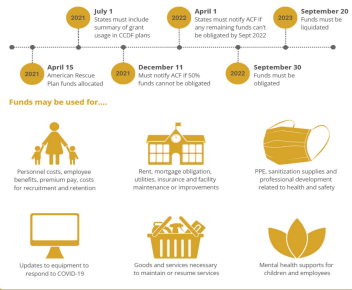
6

Begin at the Beginning

- Providers who do not participate in the Child Care Payment Program (CCPP) will also have to register with MDHS in order for the agency to be able to release funding and issue the appropriate tax documents.
- Providers may not decrease salaries or weekly wages or benefits for any employee during the grant period.
- Providers are encouraged not to collect co-payments or tuition payments from families during the grant period to the extent possible and prioritize such relief for families struggling to make either type of payment.
- If a provider is unable to provide relief from tuition payments for all families enrolled in the program, they should prioritize doing so for families most in need and target families earning below 85 percent of the State Median Income.
- Providers will have to submit monthly reports detailing how funding was spent.
- Providers are required to be open AND serving children during the grant period.
- Providers are required to operate in accordance with state and local requirements and, to the greatest extent possible, guidance from the CDC as related to Covid-19 protocols ([Guidance for COVID-19 | CDC](#)).

10

Child Care Stabilization Grants



Source: Mississippi Department of Human Services
<https://www.mdhs.ms.gov/article-child-care-stabilization-grants>

11

Who is eligible for funding?

- Providers who are licensed or registered and meet federal criteria are eligible.
- Licensed providers and Non-relative in-home providers **DO NOT** have to be participating in the Child Care Payment Program (CCPP) to be eligible for this funding.
- Some conditions will prevent providers from being awarded funding:
 - Any provider who has been found to have committed fraud/intentional program violation in the Child Care Payment Program within the past year is disqualified.
 - Any provider under revocation or suspension of their license or registration status with the MS Department of Health, Division of Child Care Licensure, or CCPP is disqualified.
 - Early Head Start or Head Start programs/grantees are not qualified.
 - Any program currently receiving state or local funding to cover operating expenses is not qualified, for example, Head Start programs, public Pre-K, etc.
- If a single owner has multiple sites, they should apply for funding separately for each license/registration number.

12

How can I use these funds?
Staff Costs

- Regular staff pay
- Benefits
- Premium pay (bonuses and/or raises)
 - Bonuses for prior months of employment going back to March 2020 and current raises in any payroll period during the funding cycle is allowed, if you have used stabilization funds or past booster funds for salary or raises, it is NOT allowed through this current funding.
- Employee recruitment
- Employee retention
- MDHS has indicated that payments for 941 etc. to Internal Revenue are allowable if they are part of payroll and salary.

13

How can I use these funds?
Your Building

- Mortgage/rent payments
 - MDHS indicates that mortgage and rent payments are allowed but purchasing of is not allowed. Specific building purchases if connected with a current loan must be discussed with MDHS. Seek guidance from MDHS to confirm if paying off your loan is possible.
- Utilities
- Facility maintenance costs with receipts for any services collected
- Facility improvements to playgrounds, bathrooms, and the building if there has been a citation issued by the licensing official (installing ramps and automatic doors and removing non-load-bearing walls to allow social distancing) Your licensing official's approval must be documented in writing. Specific cases must be answered by DHS.
- Insurance required to provide child care services
- MDHS suggestions bids to ensure you receive the best price and value for the funding. However, bids are NOT required.

14

How can I use these funds?
Equipment

- Personal protective equipment
- Cleaning and sanitation supplies and services
- Staff training/professional development related to health and safety practices
- Click here to view a COVID-19 Health and Safety Supply list created by the federal partners in the Office of Head Start. [Head Start Forward: COVID-19 Health and Safety Supply List \(hhs.gov\)](https://www.hhs.gov)

15

[illegible]

16

[illegible]

17

Planning Worksheet To Project Grant Funding

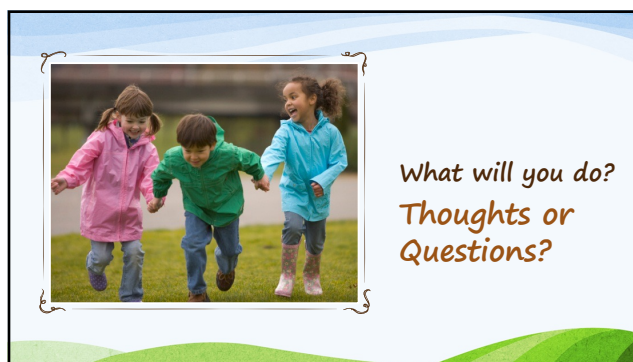
[illegible]

18

Renovate playground	\$20,000*	\$20,000 (one-time expense)	To renovate playground	-	-	-
Renovate bathroom (must have flooring, official signposting, be well-lit)	\$15,000*	\$15,000 (one-time expense)	To make bathroom accessible	-	-	-
PPE, cleaning and sanitation, professional development related to health and safety, lock box for medications, PPE security system	\$1,000 for cleaning supplies \$50,000 for security system (one-time expense) lock box \$150 (one-time expense) PPE and cleaning supplies \$2,000 per month x 6 months=\$12,000	\$50,000 for security system (one-time expense) lock box \$150 (one-time expense) PPE and cleaning supplies \$2,000 per month x 6 months=\$12,000	To make center safe and protect children, sanitation of the facility, PPE and cleaning supplies to ensure clean, hygienic environment for all	Calculation: 100-150 employees x \$2,000 for security system=\$2,000-\$1,000=\$1,000 x 6=\$6,000	\$2,000 per month \$2,000-\$1,000=\$1,000 x 6=\$6,000	\$6,000
Goods and Services Necessary to Maintain or Renew Child Care Services	\$100 for learning resources per month	\$180,000*	To purchase all the "big" curriculum if necessary, child care management training, age-appropriate learning materials, cribs, diaper changing table, diapers	Calculation: \$100 per month x 6 months=\$1,000 (one-time expense)=\$180,000	\$3,000	\$3,000
Mental Health Supports	-	\$1,000 (one-time expense)	Contract with mental health consultant(s)	\$0	-	-

Documentation is imperative of any expenditure you make or cost you incur.

19



20

Random Questions and Answers from MDHS

- Does transportation mean we can buy a van?
 - MDHS is waiting on OCC guidance. The website will be updated when it is received.
- What is the timeline for spending the funds?
 - The funds must be spent by September 30, 2022.
- How often will we receive a check?
 - After your application is approved, you will receive one check a month for six months. Providers must complete a monthly expense report showing that **SOME AMOUNT OF FUNDING WAS SPENT EACH MONTH**.
- Will providers continue to receive CCPP funds?
 - Providers will continue to receive all current income revenue including subsidy payments from MDHS and tuition payments.

21

Random Questions and Answers from MDHS

- What if I have applied to be part of a new early learning collaborative?
 - Apply for these funds and if you are selected to be a collaborative, talk with MDHS.
- If you are on the food and nutrition program, can you still apply for this grant?
 - Yes.
- Can I pay for a CPA to file monthly reports?
 - If you do not already have a CPA, you can not hire one for this grant. If currently have a CPA they can only be paid for the number of hours they spend on grant related activities.

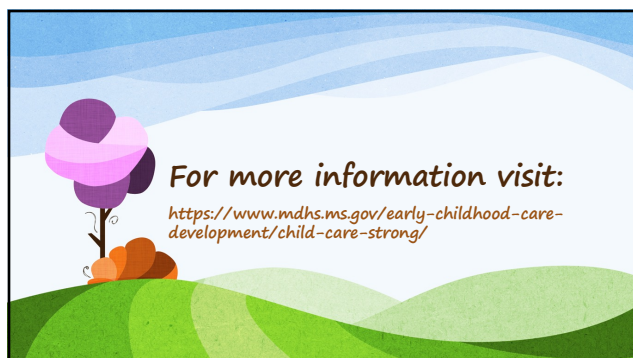
22

Questions and Answers Concerning the Use of the Calculator

<https://www.calcsmd.com/calculator-widgets/child-care-strong-award-calculator/6181a37a865264002b6ebc46>

- What is the figure the calculator gives you, monthly or six-month figure?
 - The calculations are monthly payments.
- What is the SVI score?
 - It is the social vulnerability index. You will need the 9-digit zip code to calculate.
- Will all providers get the same amount?
 - No.
- How can I document that I serve children with special needs?
 - Your license number is coded if you have been approved to serve special needs children.
- Do we total each age group before we enter in a number for the per child rate?
 - No, the per child rate is identified by the total number of children the provider is allowed to care for per licensing/MDHS regulations

23



For more information visit:

<https://www.mdhs.ms.gov/early-childhood-care-development/child-care-strong/>

24
